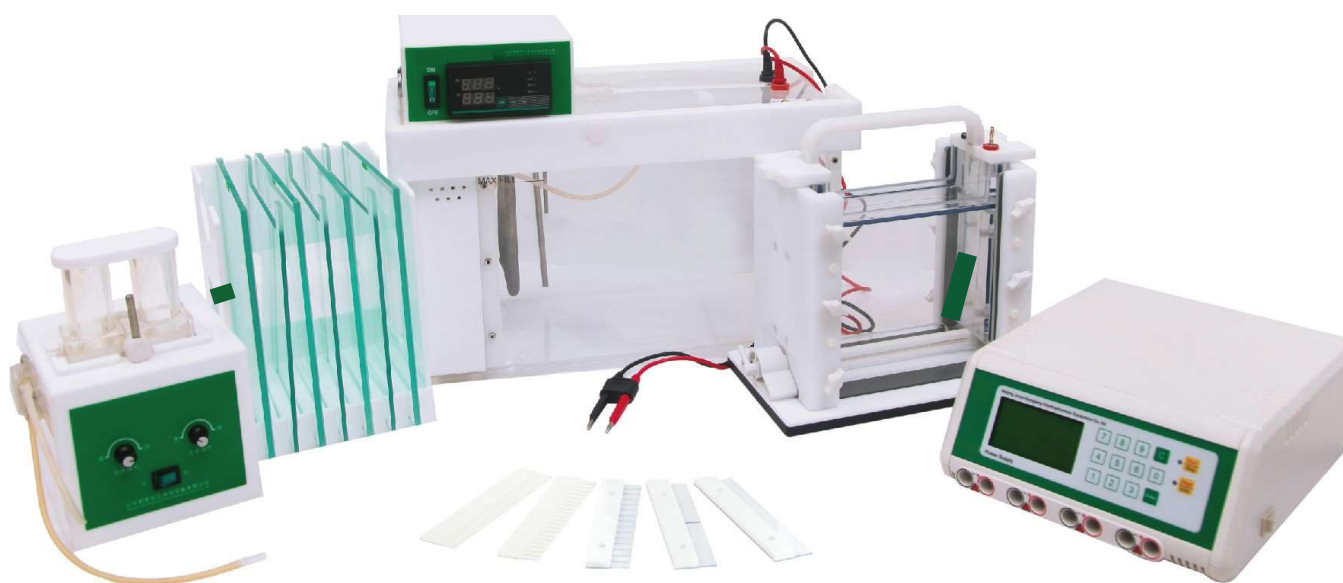


Denaturing Gradient Gel Electrophoresis System

DS-DGE-331A



Product Features

With a gel casting in original position, no need to move glasses from gel making to electrophoresis running. It is more convenient to observe gel preparing through both sides of the glasses.

With a Gradient gel electric generator, the flow rate can be adjusted.

Built-in miniature buffer liquid circulating pump, a buffer solution temperature uniformity can be achieved $\pm 5^{\circ}\text{C}$.

Side-open safety lid, easy to load samples, automatically cut off the electric field when open lid.

Type of Output: Constant voltage, constant current or constant power.

Max output: 600V, 500mA, 300W.

With over-voltage, overload auto-detection and alarm function.

Can simultaneously display all parameter set and output status.

Insulating fire-retardant materials, injection molding shell.

Can store 10 common electrophoresis ways.

Timing range: 1min~99hr, 59min

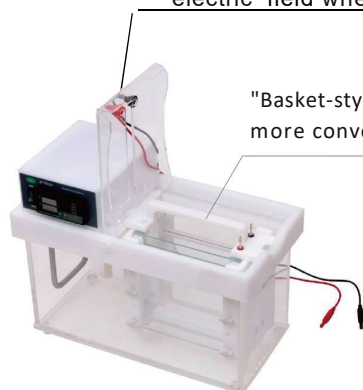
With a safety sheath to the temperature control probe, it can protect it from damaging.

With a buffer height sensor, it can protect the unit from damaging by lack of buffer.

Denaturing Gradient Gel Electrophoresis System

DS-DGE-331A

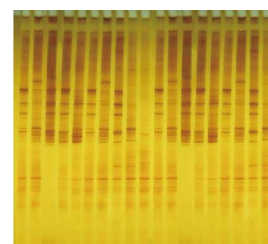
"Side-open" safety lid, easy to load samples automatically cut off the electric field when open the lid



"Basket-style" core design more convenient to load and remove.



Glass plates and temperature controller stand



Electropherogram

Model	DS-DGE-331A
Glass plate size (WxL)	200x200 (mm)
Gel size (WxL)	162x175 (mm)
Gel thickness	1.0 (mm)
Number of gel	1~2 (pc) (s)
No of samples	1~70
Total buffer volume	~10 (L)
Dimension	458x230x285 (mm)
Weigh	23.0 (kg)

Parts name	Quantity
Power supply	1
Body tank with electrodes	1
Gel casting stand	1
Gradient gel electric generator	1
Notched glass plates	4
Spacer plate with 1.0mm glass spacer	4
1.0mm thickness 1-well comb	2
1.0mm thickness 2-well comb	2
1.0mm thickness 15-well comb	2
1.0mm thickness 21-well comb	2
1.0mm thickness 35-well comb	2
Accessory kit	1
Control cables	1
Electrical cables	1