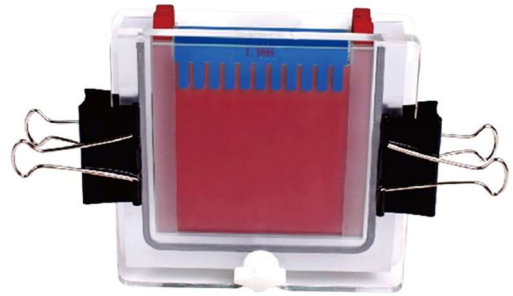


## Horizontal Electrophoresis

# DS-SVE4+ Vertical Electrophoresis Tank



### Product Overview

With two gel castings stands, 1-4 plates of gels can be made at the same time.

The installation of glass plates can be completed within 15s, easy and quick.

With a gel casting stand in original position, no need to move glasses from gel making to electrophoresis running. It is more convenient to observe gel preparing through both sides of the glasses.

With the background color, it is easy to observe sample loading and electrophoresis running.

Abundant buffer not only guarantees a cooling environment, but also keeps the pH value stable during the whole experiment.

Auto-switch-off when the lid is moved.

### DS-SVE4+ Technical Specifications

MODEL	DS-SVE4+
Glass plate size (WxL)	100x100 (mm)
Gel size (WxL)	82X88 (mm)
Gel thickness	1.0, 1.5 (mm)
Number of gel	1~4 pc (s)
No of samples	11~ 60
Total buffer volume	~1000 (ml)
Dimension (LxWxH)	220x170x120 (mm)
Weight	2.5 (kg)

### DS-SVE4+ Packing List

Parts name	Quantity
Lid with cables	1
Body tank	1
Gel casting core with electrodes	2
Gel casting stand	2
Notched glass plate	6
Spacer plate with 1.0mm glass spacer	4
Spacer plate with 1.5mm glass spacer	4
1.0mm thickness 11-wll comb	4
1.5mm thickness 11-wll comb	4
1.0mm thickness 15-wll comb	4
1.5mm thickness 15-wll comb	4
Gel releaser	2
Wedge-shaped plates	4
Dummy plate	3