

MODULAR Laboratory furniture

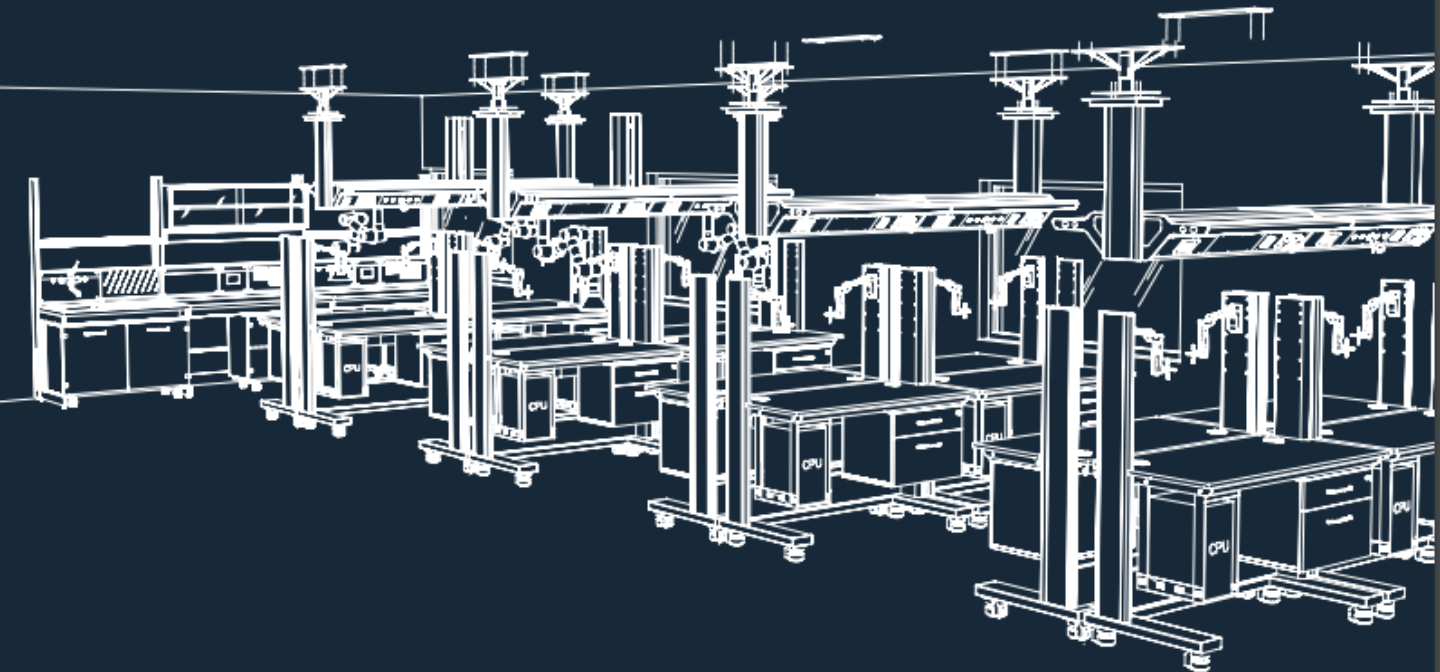
designed for reliability, precise Laboratory quality and safety standards.



- Creating Safe Solutions for Life Science Laboratories
- Engineered for Simplicity and Efficiency
- Certified for Safety and Performance

Laboratory Solution

Modular design for laboratories.



Laboratory Concepts

C- FRAME Modular design benches for laboratories.



Equipped benches, partition systems, supply beams, fume cupboards and furnishing complements set up the integrated system of *DARSUN Life Science Corporation* collection, designed to offer a complete solution for all laboratory needs.



Constant development of instruments and new methodologies applied in scientific research, set up *DARSUN Life Science Corporation* guidelines to get technological innovations for multipurpose furnishing systems.

Free-standing workstations are table based systems utilizing floor mounted tables as the key component. The workstation can be work surface height or incorporate above counter structure. The workstations can incorporate either adjustable height or fixed height work surfaces.

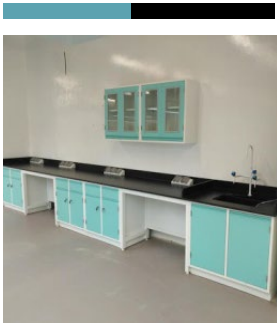
Available Color Variants



DSC-RLT



DSC-GLT



DSC-QLT



DSC-YLT



DSC-BLT

AVAILABLE OPTIONS



- Red coated paint finish anti microbial .
- Made up of Heavy Galvanized metal 18 guage.
- Epoxy powder coated brass taps with DIN 12920 color coding.
- The entire module is made up of GI panels and are bolted/rivettet for achieving maximum strength with high corrosion resistance.

Reagent Rack:-

Island Table: Two tier adjustable reagent shelf. Top & Bottom rack 300 mm Clear space and outer 380 mm. Overall height: 450 mm

DSC-RLT



- Grey coated paint finish anti microbial .
- Made up of Heavy Galvanized metal 18 guage.
- Epoxy powder coated brass taps with DIN 12920 color coding.
- The entire module is made up of GI panels and are bolted/rivettet for achieving maximum strength with high corrosion resistance.

Reagent Rack:-

Island Table: Two tier adjustable reagent shelf. Top & Bottom rack 300 mm Clear space and outer 380 mm. Overall height: 450 mm

DSC-GLT



- Aqua Blue coated paint finish anti microbial .
- Made up of Heavy Galvanized metal 18 guage.
- Epoxy powder coated brass taps with DIN 12920 color coding.
- The entire module is made up of GI panels and are bolted/rivettet for achieving maximum strength with high corrosion resistance.

Storage Cabinet:-

Chemical Storage Cabinet- upper table.
36" x 36" x 13" L x D xH inches.
Front double glass door.

DSC-QLT



- Peach yellow coated paint finish anti microbial .
- Made up of Heavy Galvanized metal 18 guage.
- Epoxy powder coated brass taps with DIN 12920 color coding.
- The entire module is made up of GI panels and are bolted/rivettet for achieving maximum strength with high corrosion resistance.

Storage Cabinet:-

Chemical Storage Cabinet- upper table.
36" x 36" x 13" L x D xH inches.
Front double glass door.

DSC-YLT



- Blue coated paint finish anti microbial .
- Made up of Heavy Galvanized metal 18 guage.
- Epoxy powder coated brass taps with DIN 12920 color coding.
- The entire module is made up of GI panels and are bolted/rivettet for achieving maximum strength with high corrosion resistance.

Reagent Rack:-

Island Table: Two tier adjustable reagent shelf. Top & Bottom rack 300 mm Clear space and outer 380 mm. Overall height: 450 mm

DSC-BLT

DARSUN LIFE SCIENCE CORPORATION provides complete solution for laboratories that includes Lab furniture, lab equipments, lab HVAC System, LAB SS Modular panels, pass box, LAF, SS Furniture etc.

Laboratory Benches



We consider safe and clean laboratory as well as eco-friendly. The materials we use are formaldehyde free and phthalate free pure aluminum profile, which leads 100% recyclable and environment friendly

Modular Lab furniture, Modern functional design, made expertly with best materials. Can be custom designed and delivered to your laboratory.

Total laboratory furniture solution: from the furniture for new lab construction to individual specialty lab furniture's like vacuum pump enclosure, mass spec bench, HPLC bench, computer bench, Fume hood and extractor.

Premium Lab Furniture System has been reinforced for its heavy-duty and more durable structure. It meets the safety practice Adaptable Laboratory Furniture.



LOAD CAPACITY UP TO 400 KGS

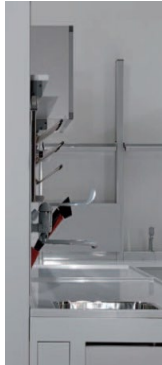
Laboratory benches are certified according to BGR234/09.06 German standard, concerning workplace safety for storage devices. The load capacity tested and certified is up to 400 kgs uniformly distributed, for all workstation types.

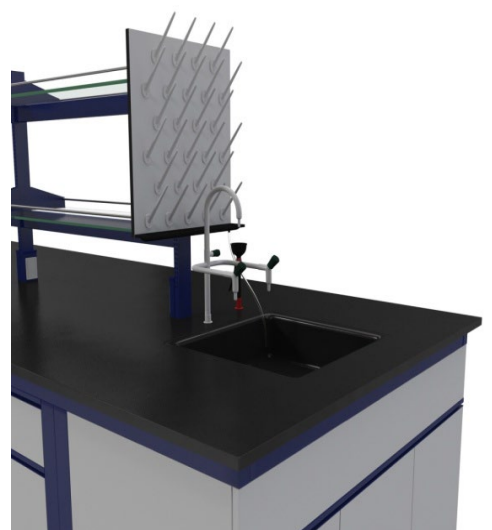
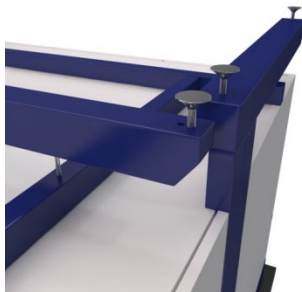


A modern lab requires highly adaptable systems able to provide integration with hi-tech equipment, making possible for end-users to operate in an ergonomic and functional workplace. DSC furniture system is designed to rationalize spaces, to distribute supply lines and to place service outlets or accessories on the most comfortable position. Through the variable combination of each element it is possible to arrange the configuration required.

MATERIALS AND QUALITY

Aluminum profiles, used to design service spine vertical uprights, ensure a stronger structural rigidity thanks to the higher mechanical precision of the assembly and reduce the overall weight of DSC benches. Aluminum, a recyclable material, improves significantly the resistance to corrosion, even in case of abrasion of the polyurethane powder coating.





Laboratory Cabinets



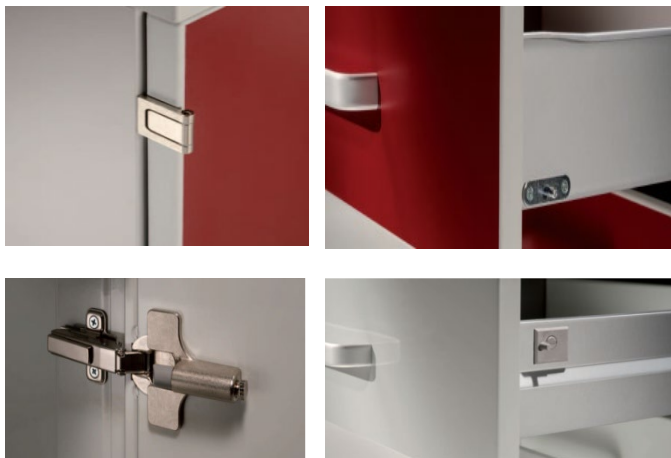
MATERIALS STORAGE

Cupboards and under bench cabinets are designed for material storage. A wide range of choices allows to define customized arrangements, supplied with doors, drawers, glass panels and hinged or sliding opening. Elements can be added with horizontal and vertical integration, with optional rails and ladders to reach high placed shelves.



COLOUR'S RANGE

Cabinet carcass and top are manufactured in light grey color. Front panels of doors and drawers can be customized as per end-user preferences. The wide range of colors available includes: maroon, charcoal grey, blue and light grey.



Available Color Variants



Cabinet carcass and front are made of resin-bonded particleboard panels, fireproof type class B-s1, d0 according to EN 13501-1. DARSUN works only with ecological panels, made of recycled wood. Steel cabinet fabrication is available on request. Each door or drawer is equipped with aluminum handle, easy to clean. Height-adjustable shelves and cabinet base are made of epoxy coated steel. Under bench cabinets are provided with swivel casters including front brake system.

Laboratory Wall Cabinets



LABORATORY WALL CABINETS

+91-9999136670

MATERIALS STORAGE

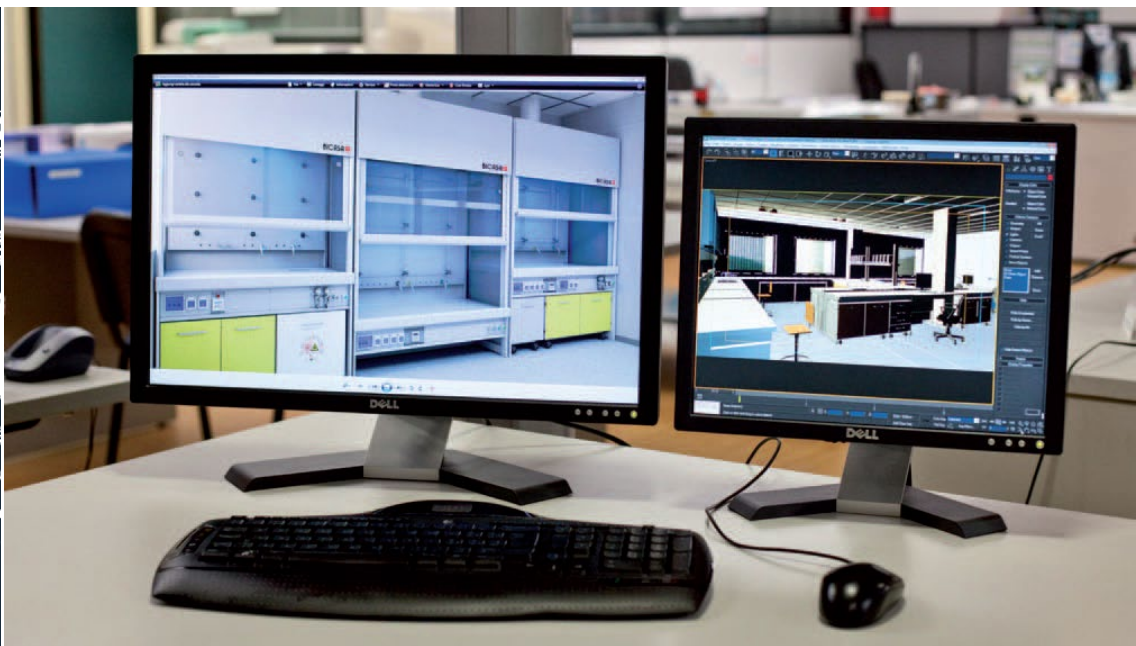
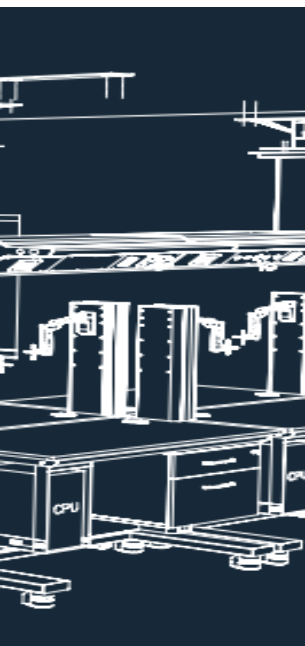
Lab wall Storage cabinets are designed for material storage. A wide range of choices allows to define customized arrangements, supplied with doors, drawers, glass panels and hinged or sliding opening. Elements can be added with horizontal and vertical integration, with optional rails and ladders to reach high placed shelves.



Wall Storage Cabinet carcass and front are made of Mild steel powder coated particleboard panels, fireproof type class B-s1, d0 according to EN 13501-1. DARSUN works only with ecological panels, made of recycled wood. Steel cabinet fabrication is available on request. Each door or drawer is equipped with aluminum handle, easy to clean. Height-adjustable shelves and cabinet base are made of epoxy coated steel. Under bench cabinets are provided with swivel casters including front brake system.

PROBLEM SOLVING

Specific requirements evaluation, improvement advises and customized solutions for each project are the strength points that characterize DARSUN, not just as products supplier, but problems solving partner.



TECHNICAL KNOW-HOW

During the project planning phase each individual element is analyzed in relation to existing rooms and intended use. The development of CAD 2D - 3D drawings and rendering presentations make the customer able to define single details of execution.





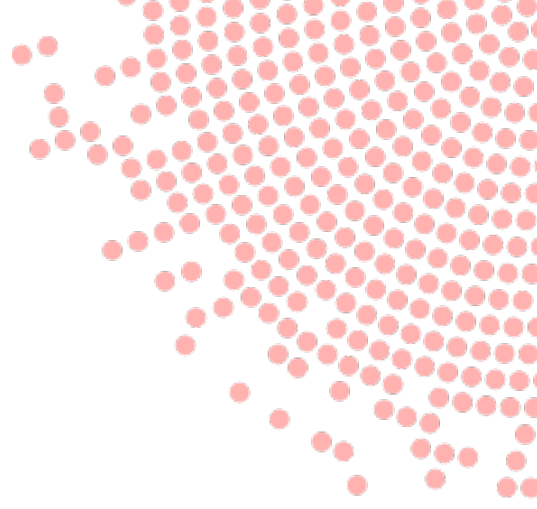
ON SITE MANAGEMENT

Really often projects require integration with existing or in process architectural works.

DARSUN offers a complete synergy work with architects and construction firms, achieving a perfect integrated performance.

An ISO 9001:2008 | ISO 13485 | EN: 12469 Compliance
OHSAS 18001 | WHO:GMP Products | NSIC Registered





DARSUN

SCIENTIFIC

21b Lawler Drive,
Oran Park, NSW, 2570,
Australia

www.darsunscientific.com
Email us at **Info@darsunscientific.com**
Or call **+61-283135514, +61-430583632**