



# Gel Documentation System

---



## India Office

16 S/F B/S, T-Block Extn.  
Jain Colony Part-2 Uttam Nagar,  
New Delhi-110059  
[info@darsunscientific.in](mailto:info@darsunscientific.in)  
(+91) 9999136670, 7835864003

## Australia Headquarters

21b Lawler Drive, Oran Park, NSW,  
2570, Australia  
[info@darsunscientific.com](mailto:info@darsunscientific.com)  
+61-283135514, 430583632

**Darsun**Scientific



Darsun Scientific

# Gel Documentation System



## DS-04S-3C/DS-04S-3E

DS Documentation system is used for gel map observation after electrophoresis running. DNA or other bio-molecules can not be seen under natural light ,but with the help of UV light and high- resolution CCD, it can be realized with fluoresent stain , such as ethidium bromide.

Working with software, the electrophoretogram can be analyzed and photographed by gel documentation system. Meanwhile, the images can be zoomed in and out according to users' requirements

### Product Overview

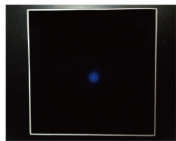
CCD with lower lux and high-resolution, easy to get dim stripes and real-time brow se, whole-screen display and simple to operate:  
6x zoom lens, easy to observe the zooming of gel.  
It is easy to observe to place the gel to the center with a center indicator. Intelligent control of dark box:  
The zoom, focus, aperture, UV light and white light can be controlled by panel keys. Auto-shut-down function for UV light when the door is opened and a controlled switch to UV light for gel cut.  
Auto-delay-shutdown function for UV light. Zoom lens protection, RS232/USB interface.  
Drawer-design gel platform with gel-cut protective cover, convenient to observe, operate and cut gel.  
White light conversion plate.  
Multi-layer coated filter kit, effectively filter out background interference noise. The zoom, focus, aperture, UV light and white light can be controlled by PC. Normative and reliable modular-design components, easy to maintain and replace

Model A	DS-04S-3C	DS-04S-3E
Effective pixel	1280x1024	2560x1920
Pixel density	10 bit	10 bit
Pixel size	5.4x5.4(um)	5.4x5.4(um)
Resolution	1.4 megapixels	5.4x5.4(um)
Signal to noise ratio	>56db	>56db
Sensitivity	Candetect the double chain DNAofEBstaining below 20pg	Candetect the double chain DNAofEBstaining below 20pg.
Camera	low illumination and high-resolution digital CCD	low illumination and high-resolution digital CCD
Zoom Lens	F=l :1.2, 2/3" inch 6x zoomlens	F=l :1.2, 2/3" inch 6x zoomlens
Filter	590 (nm)	590 (nm)
UVlight transmission size(Wxl)	250x200(mm)	250x200 (mm)
Visible light transmission size(Wxl)	250x210(mm)	250x210(mm)
Transmission UV wavelength	302 (nm)	302 (nm)
Reflectance UV wavelength	254, 365 (nm)	254, 365 (nm)
Transmission UV lamp power	302nm (8W)	302nm (8W)
Reflectance UV lamp power	254nm (11W), 365nm (11W)	254nm (11W), 365nm (11W)
Dimension (LxWxH)	470 x 405x820 (mm)	470 x 405x820 (mm)
Weight	29.0(kg)	29.0(kg)

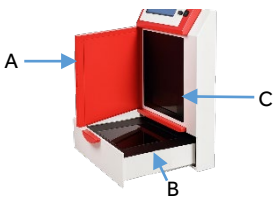
# Gel Documentation System



UV protective cover, easy and safe to cut gel



Center position indicator



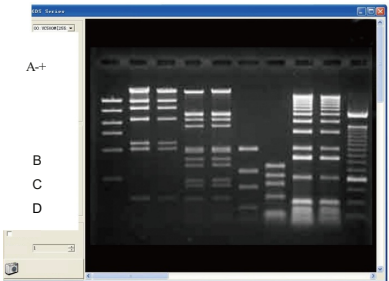
A Gel observation door  
B Drawer design gel platform  
C Gel observation window

### 1. Real time image preview and photograph

The exposure value adjustment: according to the different experimental conditions, automatically or manually adjust the exposure value, can achieve the best effect exposure.

Light control button: You can control the white light and other three UV lamps through the connected computer. Fine and coarse adjustment button: Users can choose the regulation speed. Zoom, focus, aperture adjusting button: you can adjust the image size, focal length and aperture by computer.

Flip vertical button: according to the need to flip the image; Image capture button: you can take and save the image.



### 2. Image analysis

The lanes can be recognized automatically and manually. Bacterial colony and dot hybridization can be analyzed and colony can be counted automatically and manually.

Molecular weight, optical density, mobility, pH value and percentage can be calculated and comprised.

Experiment reports can be exported to text and excel format and printed out.



### 3 image processing

A Experimental data's can be remarked with text, arrows, graphics and other annotation tools for mis operation and data's protection for unlimited undo.

B Images can be rotated zoomed, anti-colored and adjusted on brightness, grayscale and contest.

Parts name	Quantity
Mainframe	1
UVprotective cover	1
White light conversion board	1
Control line	1
USBl ine	1
5Ainsurance tube	2
Power cord	1