



# CONSOLE FREEZE DRYER

---



#### India Office

16 S/F B/S, T-Block Extn.  
Jain Colony Part-2 Uttam Nagar,  
New Delhi-110059  
[info@darsunscientific.in](mailto:info@darsunscientific.in)  
(+91) 9999136670, 7835864003

#### USA Headquarters

30 N Gould St, Ste R  
Sheridan, Wyoming 82801  
United States

**Darsun**Scientific



# Darsun Scientific CONSOLE FREEZE DRYER

## DSFT SERIES

### Product Overview

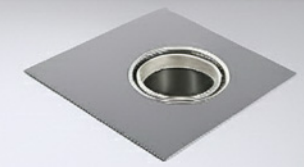
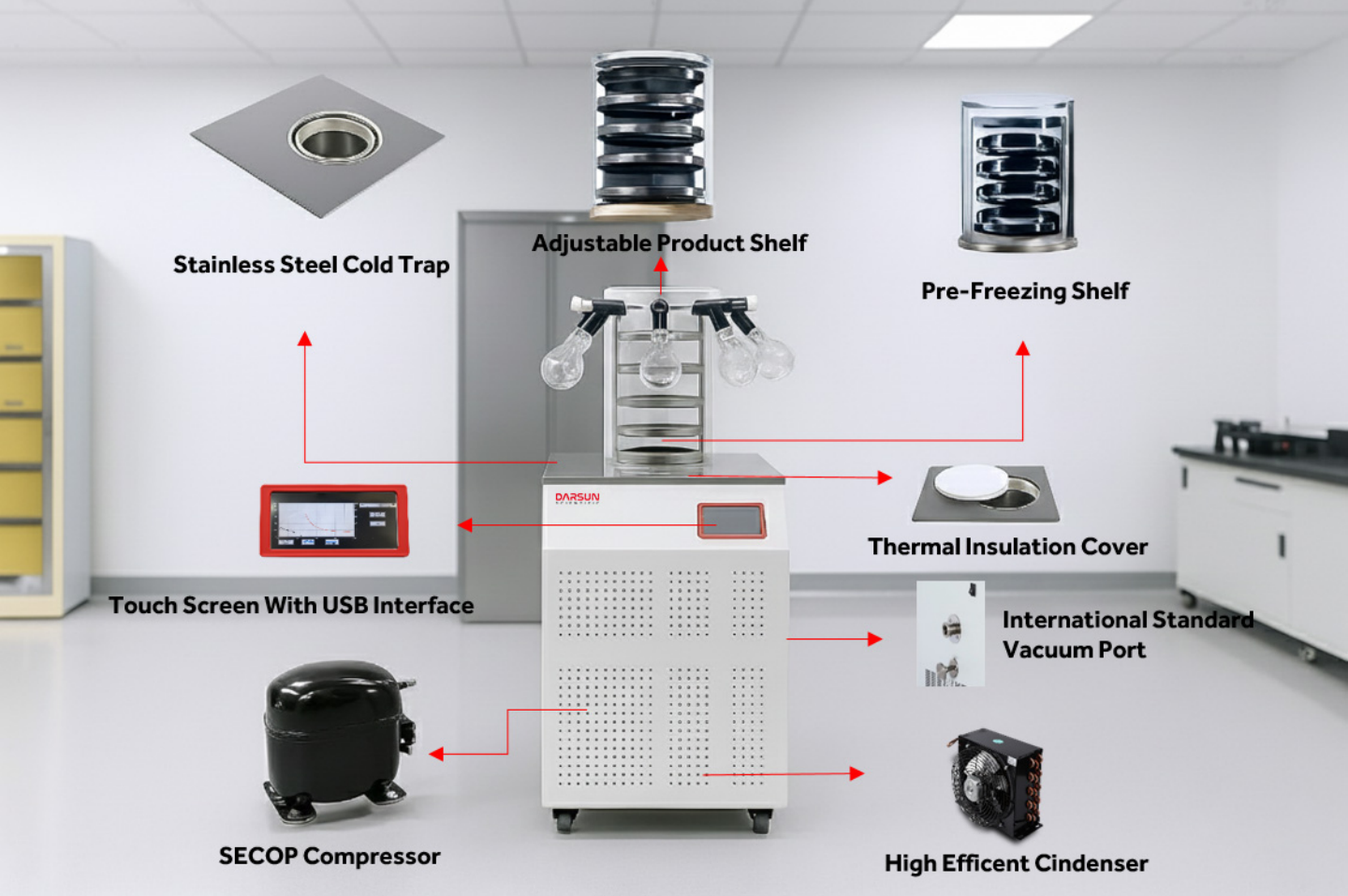
Darsun freeze dryer is specialized designed for small batch test in laboratory. The Bench top and Console freeze dryers are with advanced design and occupies small area.



### product Features

1. 7" colorful touch panel, can display the product samples temperature, cold trap temperature and vacuum etc in digital and curve.
2. Touch panel with tilt design conforms to ergonomics and operate more comfortably.
3. Condenser temperature of  $-80^{\circ}\text{C}$  is optional (Except bench top models)
4. Shelf heating function is optional;
5. Accessories for different chamber and manifold are optional;
6. The vacuum pump is standard accessory, which is packed in a separate package, needs to be installed in user's site independently.

Model	DSFT-18S	DSFT-18T	DSFT-18P	DSFT-18PT
IMAGE				
Type	Standard chamber	Stoppering chamber	Standard chamber with 8 port manifold	standard stoppering chamber with 8 port manifold
Final condenser temp ( $^{\circ}\text{C}$ )	-55 or -80	-55 or -80	-55 or -80	-55 or -80
Vacuum Degree (Pa)	<10	<10	<10	<10
Condenser volume (L)	23	23	23	23
Freeze drying area ( $\text{m}^2$ )	0.18	0.135	0.18	0.135
Ice condenser capacity (Kg/24h)	6	6	6	6
Qty of shelf	4	3	4	3
Material loading capacity/shelf (ml)	450	450	450	450
Material loading capacity (ml)	1800	1350	1800	1350
Freeze drying time (h)	24	24	24	24
Manifold	/	/	8 pieces	8 pieces
USB Interface	Y	Y	Y	Y
Drying Chamber(standard)	Transparent acrylic			
Vacuum Pump(standard)	Model: 2XZ-2, Speed: 2L/S			
Control System	Microprocessor, touch screen			
Power supply (V/Hz)	220V/50Hz,60Hz			
Exterior dimension (WxDxH mm)	560*710*950/1390			
Note	Shelf(plate) heating and cold trap(ice condenser) defrosting function are optional; The vacuum pump is independently packed in a separate package; The freeze dryer shipment includes vacuum pump, standard drying chamber and all accessories, like valve, flask etc, if needed			



**Stainless Steel Cold Trap**



**Adjustable Product Shelf**



**Pre-Freezing Shelf**



**Touch Screen With USB Interface**



**Thermal Insulation Cover**



**International Standard Vacuum Port**



**SECOP Compressor**



**High Efficient Condenser**



**India Office**

16 S/F B/S, T-Block Extn.  
Jain Colony Part-2 Uttam Nagar,  
New Delhi-110059  
info@darsunscientific.in  
(+91) 9999136670, 7835864003

**USA Headquarters**

30 N Gould St, Ste R  
Sheridan, Wyoming 82801  
United States