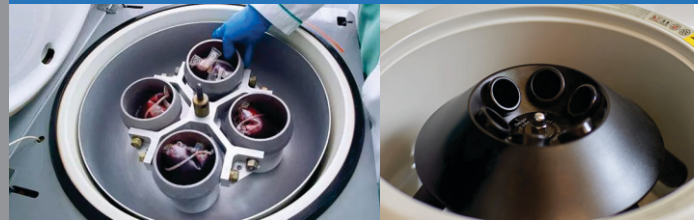




LARGEST CAPACITY REFRIGERATED CENTRIFUGE DSL-070M

12 Blood Bags



SPECIFICATION

SPIN YOUR EXPERIMENT TO PERFECTION

- Widely used in pharmaceutical factories and laboratories
- Brushless frequency motor with high torque, maintenance-free, no powder pollution
- Fast acceleration and deceleration performance
- Digital display for program, speed, time, RCF, and temperature
- Microcomputer control with 10 programs and 10 acceleration/deceleration settings
- Multiple rotor options available
- Electric lid lock for enhanced safety
- Compact design with high-speed capability
- Imbalance protection system
- High-quality steel body, safe and reliable
- High-speed capability for efficient sample processing
- Advanced imbalance detection and protection system
- Automatic shutdown in case of imbalance
- Low noise and vibration during operation
- Durable construction using high-quality steel body
- Corrosion-resistant exterior for long-term use
- Safe, reliable, and designed for continuous operation
- Ideal for routine laboratory and industrial applications

TECHNICALS

TECHNICALS			
Max. Speed	7000rpm	Acc/Dec	10 Kinds
Max. RCF	11650×g	Speed Accuracy	±20r/min
Max. Capacity	6×2400ml (12*500ml blood bag)	Temperature Accuracy	±1°C
Time Range	1~9h59min	Voltage(V/Hz)	AC 380V 50HZ/60HZ
RPM/RCF Convert	Yes	Size (W x D x Hmm)	940×890×1000mm
Noise (dB)	<65	Net Weight(Kg)	570KG
Temperature	-20~40°C	Certificates	CE, ISO & Calibration report

ROTORS

Order No.	Rotor No.	Max Speed (rpm)	Max Volume (ml)	Max. RCF(×g)
7M-1	Swing Rotor	4000	6×2400ml	5330
7M-2	Angle Rotor	7000	6×1000ml	11650
7M-3	Swing Rotor	4200	2×6×1000ml	5680

*Rotors have to be ordered separately