

Ultra Low Temperature Deep Freezer-40



Specification

Construction

Inner made of electro galvanized steel with antimicrobial coating to prevent microbial growth. Exterior of powder coated galvanized steel.

Temperature Control System

Electronic thermostat control, digital display of the temperature inside the box, the temperature inside the box is adjustable from -10°C to -40°C. High and low temperature alarm control, the alarm temperature point can be set according to needs.

Safety

Three types of fault alarms: high temperature alarm, low temperature alarm, and sensor failure alarm. Alarm type: sound buzzer alarm.

Refrigeration

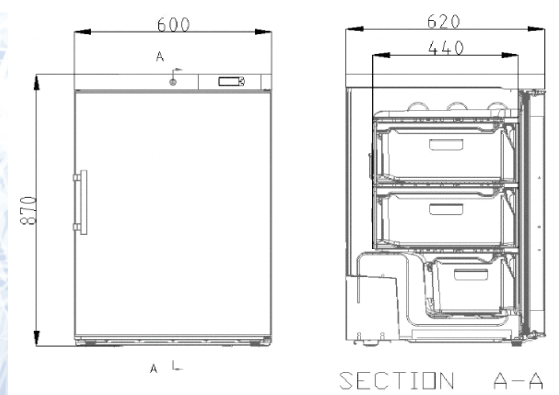
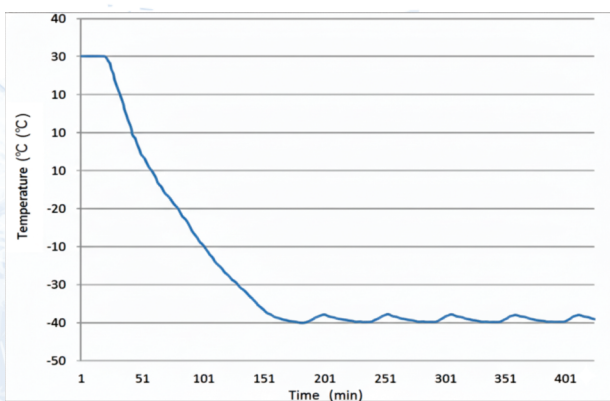
High quality compressor and high quality fan, fast refrigeration. Thickened insulation layer, ultra-microcellular foaming technology, good insulation effect. Fluorine-free foaming, fluorine-free refrigerant, green and environmentally friendly. Reasonable optimization of the evaporative condensation system design, strong refrigeration.

Humanity design

The safety door lock design prevents random opening. With drawers in the box, it is convenient to use. Wide climate zone design, suitable for use in 10°C~32°C environment. Temperature measuring holes are deployed on the side for user convenience.



Cooling Curve



Darsun Scientific Inc USA
30 N Gould St, Ste R Sheridan, Wyoming 82801
United States
Email: info@darsunscientificinc.com

Indian branch address:
16 S/F B/S, T-Block Extn. Jain Colony Part-2
Uttam Nagar, New Delhi-110059
info@darsunscientific.in | (+91) 9999136670

DarsunScientific

Model		DS-40L100	
Technical Data	Cabinet Type	Upright	
	Climate Class	SN	
	Cooling Type	Direct cooling	
	Defrost Mode	Manual	
	Refrigerant	HC	
	Noise Level (dB(A))	53	
Performance	Cooling Performance (°C)	-40	
	Temperature Range (°C)	-20~-40	
Control	Controller	Microprocessor	
	Display	LED	
Electrical Data	Power Supply (V/Hz)	220/50	
	Power (W)	110	
	Electrical Current (A)	0.55	
Dimensions	Capacity (L/Cu.Ft)	100/3.5	
	Net/Gross Weight (approx)	kg	38/40
		lbs	83.6/88.0
	Interior Dimensions (W*D*H)	mm	410*440*630
		in	16.1*17.3*24.8
	Exterior Dimensions (W*D*H)	mm	600*620*870
		in	23.7*24.4*34.3
	Packing Dimensions (W*D*H)	mm	630*645*905
in		24.8*25.4*35.7	
Container Load (20'/40'/40'H)	54/114/114		
Alarms	High/Low Temperature	y	
	Sensor Error	y	
Accessories	Caster	y	
	Foot	y	
	Drawers	3	
Certification	CE	y	